

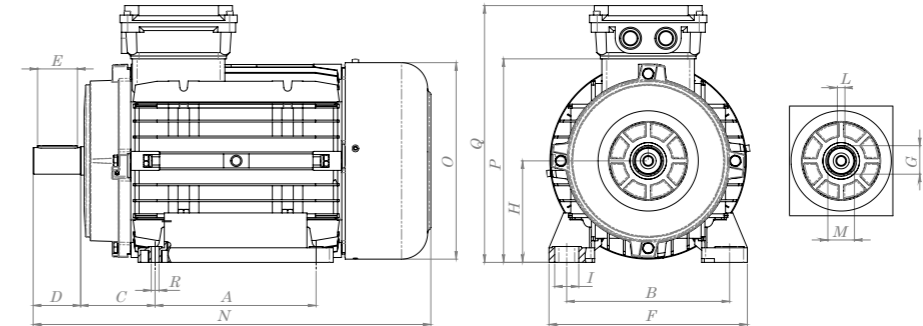
MEC 160 - MEC 180



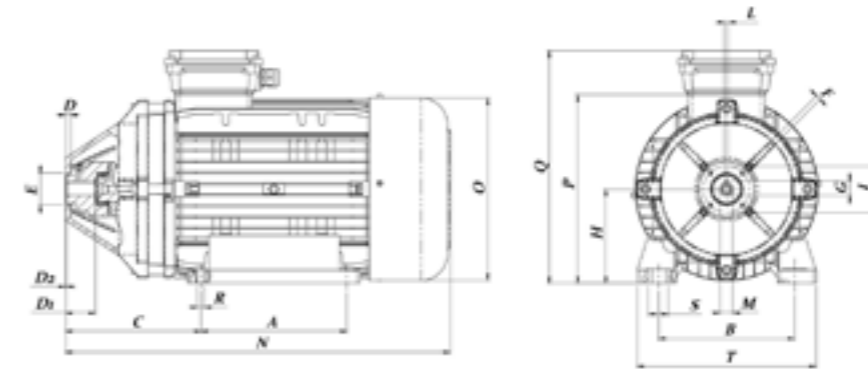
MEC 160 - MEC 180



DIMENSIONI / DIMENSIONS



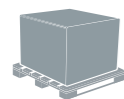
Codice / Code	Mod.	A	B	C	D	E	F	G	H	I	L	M	N	O	P	Q	R
3.002.12.049	MEC160	254	257	117.5	75	63	313	45	160	38	12	42	627.5	310	321	405	12
3.002.12.046	MEC180	279	257	119	75	63	342	51.5	180	38	14	48	670.5	349.4	361	445	13



Codice / Code	Mod.	A	B	C	D	E	F	G	H	I	L	M	N	O	P	Q	R	D1	D2
3.002.12.049	MEC160	254	257	559	10	61	313	27.3	160	88	8	24	695	310	321	405	12	57	2
2.081.12.030	MEC180	279	257	260	10	61	342	27.3	180	88	8	24	735	349	361	445	13	57	2

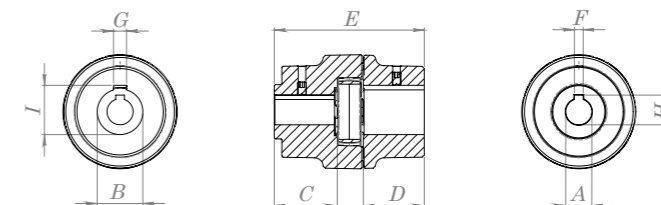
Pompe Mazzoni
Mazzoni Pumps
GM - XM

MEC	FASE PHASE	VOLT	HP (Kw)	RENDIMENTO EFFICIENCY	A	Cos φ	Hz (GIRI / ROUNDS)
160	3	400/700	20 (15)	90.6%	27.7 - 16	0.85	50 (1450 rpm) 60 (1740 rpm)
180	3	400/700	30 (22)	92.3%	39.5 - 23	0.91	50 (1450 rpm) 60 (1740 rpm)



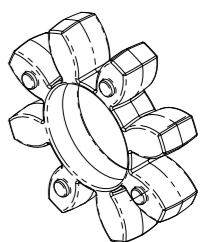
MEC	PEZZI PER PALLET / PIECES EACH PALLET	CM	INCH	KG	LBS
160	1	120X80X50	47.24X31.49X19.68	140	308.64
180	1	120X80X50	47.24X31.49X19.68	180	396.83

GIUNTO ELASTICO / ELASTIC COUPLING



Codice Code	MEC	A	B	C	D	E	F	G	H	I
3.055.02.010	160	Ø24	Ø42	55.5	56	138	8	12	27.3	45.30
3.055.02.009	180	Ø24	Ø48	58	58	138	8	14	27.3	51.8

RICAMBI / SPARE PARTS



4.049.02.001
AMMORTIZZATORE GIUNTO
DAMPER FOR COUPLING